

JOYA™ TOUCH 22



The ultimate Self-Shopping companion



JOYA™ touch 22

EMPOWERED TO DELIVER MORE

Datalogic, the pioneer of self-scanning solutions for more than 15 years, is pleased to announce Joya Touch 22, the ultimate self-shopping companion. The new device delivers top class performance powered by the industry leading Qualcomm® processor. It has enhanced self-scanning capabilities allowing consumers to scan and pack items faster, leading to queue busting at the checkout while offering a comfortable and unique shopping experience. The new device is designed to meet the most demanding Self-Scanning application requirements and is optimized to delight your customers with a colorful 4.3-inch display, ideal for in-store lighting systems.

ACCELERATE YOUR ROI

Invest less and get more value with Joya Touch 22. Our unique wireless charging technology in the self-shopping market eliminates down time from damaged pins. The Boost Recharge feature ensures quick recharging, optimizing the number of devices needed per store. Give your customers, your staff and your budget a break with a device that delivers the best value.

ONE DEVICE WITH TWO FORM FACTORS IN CUSTOM COLORS

Enjoy a new approach with a tailored solution. The Joya Touch 22 device can be personalized with standard or custom-made colors, enhancing your brand to make it more visible, increasing your customer loyalty, and for those operational applications where a professional look is preferred, it is available with black housing, a perfect companion for any situation.

Available in two form factors: a pistol-grip version with a comfortable trigger and a handheld version resembling a smartphone. Users can change from one to the other with ease, adapting to different use cases.

TOP READING PERFORMANCE

Joya Touch 22 offers advanced scanning technology with a Megapixel imager for improved near field scanning performance for all types of 1D/2D codes. The "Presentation mode" leverages the ToF sensor for automatic reading without holding the device, letting your customers enjoy a more comfortable and frictionless shopping experience.

EXTENDED SUPPORT AND COOPERATION WITH INDEPENDENT SOFTWARE VENDORS (ISVs)

Datalogic recognizes the unique value and expertise that Independent Software Vendors (ISVs) enhance to our solutions offered in retail segment. Our software partners offer a wide range of applications including self-shopping scanning features, enhanced promotions, location-based promo and offers, recipes, shopping list, payment and product way finders ensuring a smooth shopping experience.

FEATURES

- Qualcomm® platform SDA660 System-on-Chip running at 2.2 GHz
- Android™ operating System with Google Mobile Services
- 4 GB RAM Memory and 32 GB Flash Memory storage
- Wi-Fi featuring 2x2 MU-MIMO for higher throughput and coverage
- Advanced Megapixel imager, ideal for all types of 1D/2D codes on printed material or displayed on screens
- Bluetooth® v5.1 with BLE to support different peripherals consuming less power
- Backward compatibility with all Joya Touch and Memor 1 accessories
- Datalogic's 'Green Spot' technology for visual good-read feedback
- Compatible with all major MDM providers
- Large 4.3 inch capacitive multi-touch FWVGA display with Corning Gorilla® Glass 3
- Datalogic's SoftSpot™ technology for innovative triggering through the touch display
- Wireless charging technology eliminates all contacts on the device and cradle
- Precise indoor location with Quuppa Intelligent Locating System™
- EASEOFCARE Service Plans offer a wide range of service options to protect your investment, ensuring maximum productivity and ROI. Datalogic Shield, a service for Android security patches and OS upgrades is included with EASEOFCARE.

INDUSTRIES - APPLICATIONS

Retail:

- Self-Shopping
- Queue-Busting
- Assisted Sales
- Store Inventory
- Stock Lookups
- Shelf Replenishment
- Markdowns/Markups
- Online order Click and Collect
- Access Control

Manufacturing and Logistics

- Inventory
- Picking/Packing
- Shipping/Receiving
- Track & Trace
- Intralogistics





WIRELESS COMMUNICATIONS

Local Area Network (WLAN)	IEEE 802.11 a/b/g/n/ac and 802.11 d/e/h/i/k/r/v/w/mc (for indoor localization); IPv4, IPv6 2x2 MU-MIMO for higher throughput and coverage Frequency range: country dependent, typically 2.4 GHz and 5 GHz bands Security standards: WPA/WPA2/WPA3 Personal and Enterprise 802.1x EAP: PEAP/MSCHAPv2, PEAP/GTC, TLS, TTLS/PAP, TTLS/MSCHAP, TTLS/MSCHAPv2, TTLS/GTC, PWD, TLS (WPA3 SuiteB/192-bit)
Personal Area Network (WPAN)	Class 2, Bluetooth V5.1, with BR/EDR and Bluetooth Low Energy (BLE)
NFC Communication	NFC communication between device and cradle

DECODING CAPABILITY

1D / Linear Codes	Auto discriminates all standard 1D codes including GS1 DataBar™ linear codes.
2D Codes	Aztec Code; China Han Xin Code; Data Matrix; MaxiCode; Micro QR Code; QR Code; Dot Code
Postal Codes	Australian Post; British Post; China Post; IMB; Japanese Post; KIX Post; Korea Post; Planet Code; Postnet; Royal Mail Code (RM4SCC)
Stacked Codes	EAN/JAN Composites; GS1 DataBar Composites; GS1 DataBar Expanded Stacked; GS1 DataBar Stacked; GS1 DataBar Stacked Omnidirectional; MacroPDF; MicroPDF417; PDF417; UPC A/E Composites
Digital Watermark Codes	Digimarc Barcode (Red LED illumination model)

ELECTRICAL

Battery	Replaceable battery pack with rechargeable Li-Ion batteries; 3.6 V; 3,300 mAh (12 Watt-hours)
Wireless Charging	Two charging options: Fast charging or Standard charging

ENVIRONMENTAL

Drop Resistance	Withstands repeated drops from 1.2 m / 4.0 ft onto steel or concrete according to IEC 60068-2-32 method 1
Temperature	Operating: -10 to 50 °C / 14 to 122 °F
Tumble Specification	1,000 0.5 m / 1.64 ft tumbles at room temperature according to IEC 60068-2-232 method 2

INTERFACES

Interfaces	USB-C: High Speed USB 2.0 Host and Client
-------------------	---

USER INTERFACES

SoftSpot Technology	Virtual trigger/scan key
Triggers	Pistol-grip (pistol variant only); motion trigger
Vibration	Software programmable

IMAGE CAPTURE

Black and White via Scan Engine	Auto contrast and brightness; Auto noise removal; Exposure and illumination controls
--	--

SENSORS

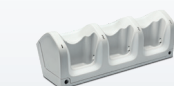
Accelerometer	3-Axis accelerometer
ToF	Automatic scanning feature 'Presentation mode'
Gyroscope	3-axis gyroscope



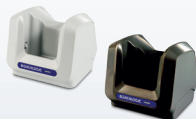
Caution: Laser Radiation - do not stare into beam

ACCESSORIES

Cradles and Holders



91ACC0043, 91ACC0096: 3-Slot Cradle-Wall Mount



91ACC0072 Single Slot Cradle Locking, White



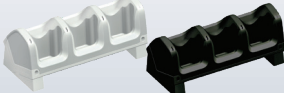
94ACC0207 Single Slot Dock Locking, Black



91ACC0073 Single Slot Cradle Charge only, White



94ACC0208 Single Slot Dock Charge only, Black



94ACC0206, 91ACC0069: 3-Slot Cradle-General Purpose

Cases / Holster



91ACC0079, 94ACC0085, 94ACC0209, 94ACC0210: Rubber Boot, Black or Blue, Pistol or Handheld



91ACC0080 Belt Holster

Miscellaneous



91ACC0047 Trolley Holder (60 pcs)



91ACC0036 Lanyard

PHYSICAL CHARACTERISTICS

Color Customization	Top case and battery cover (both handheld and pistol-grip models) and Scan Trigger (pistol-grip models) are available in various standard or custom colors
Colors (Standard)	Enclosures: Light Grey; Dark Grey and Black; Battery Covers: Blue; Red; Green; Orange; Yellow; Light Grey and Black
Display	4.3 inch full touch TFT-LCD color display; FWVGA: 854 x 480 pixels; 16M colors, LED backlight
Touch Screen	Capacitive, multi-touch, Gorilla® Glass 3 with air gap
Physical Keys	Handheld: Home/scan fully programmable key Pistol-Grip: Home/scan fully programmable key; Scan Trigger key
Lighting	Software programmable, lights at the bottom of the battery cover
Dimensions	Handheld: 14.5 x 7.7 x 3.4 cm / 5.7 x 3.0 x 1.3 in Pistol-Grip: 14.5 x 7.7 x 11.6 cm / 5.7 x 3.0 x 4.5 in
Weight	Handheld: 285 g / 10.1 oz; Pistol-Grip: 317 g / 11.2 oz

READING PERFORMANCE

Imager Sensor	Imager Sensor
Print Contrast (Minimum)	25%
Field of View	42°H x 32°V
Depth of Field	4.5 to 42.0 cm / 1.7 to 16.5 in on UPC/EAN 13
Resolution (Maximum)	1D Linear: 2.5 mils; Data Matrix: 6 mils; PDF417: 3 mils
Reading Indicators	Loudspeaker (Polyphonic); Datalogic's 'Green Spot' technology for visual good-read feedback

SAFETY & REGULATORY

Agency Approvals	The product meets necessary safety and regulatory approvals for its intended use.
Environmental Compliance	Complies to EU RoHS

SOFTWARE

Applications	Datalogic launcher as lockdown solution; Datalogic Enterprise Browser as lockdown browser supporting Javascript SDK; Others: Datalogic's SoftSpot soft Trigger; WiFi Guard; Datalogic Logger
Provisioning	San2Deploy Studio; Android Zero-Touch; QR Code Enrollment
Configuration and Maintenance	Scan2Deploy Studio; OEM Config; ProfileManager; Wi-Fi QR Code Generator
Development	Datalogic Android SDK; Xamarin SDK; Ionic Cordova SDK; React Native SDK; Datalogic Enterprise Browser Javascript SDK
MDM	Soti MobiControl; VMware Airwatch; Ivanti Avalanche; 42Gears SureMDM; Microsoft Intune

SYSTEM

Memory	System RAM: 4 GB; System Flash: 32 GB
CPU	Qualcomm® SDA660 System-on-Chip 2.2 GHz
Operating System	Android 11 (Upgradeable to Android 13)

WARRANTY

Warranty	1-Year Factory Warranty
-----------------	-------------------------