

# POWERSCAN™ 9600 DPX

Pioneering Industrial Handheld Scanner for Direct Part Marking Traceability

## ULTRA-RUGGED WITH NEW BALANCED ERGONOMICS!

The PowerScan family of bar code readers is the ultimate industrial handheld scanner designed and constructed to withstand the toughest environmental conditions. The PowerScan 9600 imagers have an ultrarugged design, an ergonomic shape with well-balanced weight to reduce operator stress during daily activities.

## DPM TECHNOLOGY

The PowerScan 9600 DPX series addresses Direct Part Marking (DPM) applications where codes are directly marked on the items for traceability with different marking technologies such as laser etching, dot peening, inkjet printing and electrochemical etching. The Datalogic patented 4D learning system automatically sets up the best acquisition parameters and decoding algorithms, without the need to configure the scanner for every different application.

## WIRELESS CHARGING

The PowerScan 9600 DPX scanner features Datalogic's Wireless Charging system. Based on inductive-charging technology, Datalogic's Wireless Charging System eliminates battery contacts and pins that often get dirty, bent, or broken over time – and this removes a key point of failure for devices used in industrial and retail functions.

## MOBILITY ENHANCES PRODUCTIVITY

The PowerScan 9600 DPX cordless model further enhances the operator efficiency and safety with Bluetooth 5.0 or Datalogic's STAR Cordless System™. The base/charger has a modular design and is available with multiple interface plug-ins for standard and industrial communication, such as RS-232, USB, Standard Ethernet, and Industrial protocols.



## FEATURES

- Available in corded, cordless Bluetooth, and cordless STAR with display option models
- Omnidirectional reading on 1D, stacked and 2D codes
- DPM and label printed codes
- Water and Particulate Sealing Rating: IP65 and IP67; 10 million hits trigger
- Center of gravity design
- Modular cradle design allowing interface expansion
- Dedicated illumination for DPM codes and autofocus system
- Datalogic's 3GL™ (3 Green Lights) technology and loud beeper for good-read feedback
- Wireless Charging reducing total cost of ownership
- EASEOFCARE Service Plans offer a wide range of service options to protect your investment, ensuring maximum productivity and ROI

## INDUSTRIES - APPLICATIONS

- **Manufacturing Shop Floor:**
  - Work-in-Progress
  - Sub-Assembly
  - Component Tracking
  - Quality Control
  - Line Inventory Control



**Datalogic Partner**  
 Beratung-Verkauf-Service  
 Integer Solutions GmbH  
 Industriestraße 4, 61200 Wölfersheim  
 Tel.: +49-6036-90557-0  
 www.integer-solutions.com



# POWERSCAN 9600 DPX

## TECHNICAL SPECIFICATIONS

CORDLESS COMMUNICATIONS	
<b>PM9600 DPX</b>	<b>Datalogic STAR Cordless System</b> Radio Frequency: 433 MHz; Effective Radiated Power: 433 MHz: < 10 mW; Point-to-Point/Multi-Point Configuration; Max. Readers per Radio Receiver: 16; Two Way Communications; Radio Range (Open Air): 433 MHz: 150 m / 492 ft low speed; 100 m / 328 ft high speed
<b>PBT9600 DPX</b>	<b>Bluetooth Wireless Technology</b> Radio Frequency: 2.4 GHz; Profiles: SPP (Serial Port Profile) and HID (Human Interface Device); Protocol: Bluetooth 5.0 Certified; Class 1, Class 2 and Class 3; Radio Range (Open Air): 100.0 m / 328.0 ft; Range distances are measured using the base station; Range with connection to other Bluetooth peripherals may show different results. Security: Data Encryption; Scanner Authentication
DECODING CAPABILITY	
<b>1D / Linear Codes</b>	Auto discriminates all standard 1D codes including GS1 DataBar™ linear codes.
<b>2D Codes</b>	Aztec Code; China Han Xin Code; Data Matrix; MaxiCode; Micro QR Code; QR Code; Dot code
<b>Postal Codes</b>	Australian Post; China Post; IMB; Japanese Post; KIX Post; Planet Code; Portuguese Post; Postnet; Royal Mail Code (RM4SCC); Swedish Post
<b>Stacked Codes</b>	EAN/JAN Composites; GS1 DataBar Composites; GS1 DataBar Expanded Stacked; GS1 DataBar Stacked; GS1 DataBar Stacked Omnidirectional; MacroPDF; MicroPDF417; PDF417; UPC A/E Composites
ELECTRICAL	
<b>Current</b>	PD9630-DPX: Operating (Typical): 470mA @ 5V / 190 mA @ 12V Standby/Idle (Typical): 89 mA @ 5V / 41 mA @ 12V PM/PBT9600-DPX: Operating: 552 mA @ 4.1V Charging (Typical) < 15 W; Cradle BC96xx only: 150 mA @ 5 V
<b>Battery</b>	Lithium-Ion: 3350 mAh Charge Time @ 12 VDC: 2.5 hours to charge up to 95%, 3.2 hours to charge 100%, External Power Reads per Charge: 80,000+
<b>Input Voltage</b>	Corded models: 5 - 30 VDC ± 5% Cordless models: Host powered: 5V DC ± 5% or 10 - 30 VDC External power supply: 10 - 30 VDC ± 5%
ENVIRONMENTAL	
<b>Ambient Light</b>	0 - 100,000 lux
<b>Drop Resistance</b>	Withstands 50 drops from 2.5 m / 8.2 ft @ 20 °C / 68 °F; Withstands 50 drops from 2.0 m / 6.6 ft @ -20 °C / -4 °F
<b>Trigger Resistance</b>	Withstands 10 million hits
<b>ESD Protection (Air Discharge)</b>	20 kV
<b>Humidity (Non-Condensing)</b>	0 - 95%
<b>Particulate and Water Sealing</b>	IP67 and IP65; Cradle IP65 (specific models)
<b>Temperature</b>	Operating: -20 to 50 °C / -4 to 122 °F Storage/Transport: -40 to 70 °C / -40 to 158 °F Charging: 0 to 40 °C / 32 to 104 °F nominal, 0 to 35 °C / 32 to 95 °F ideal
INTERFACES	
<b>Interfaces</b>	RS-232 / USB / Ethernet and Industrial Protocols
PHYSICAL CHARACTERISTICS	
<b>Colors Available</b>	Black
<b>Dimensions H x L x W</b>	Corded models: 19.0 x 14.0 x 7.9 cm / 7.5 x 5.5 x 3.1 in Cordless models: 19.7 x 14.9 x 7.9 cm / 7.8 x 5.9 x 3.1 in
<b>Display</b>	PM9600-DDPX: 1.8" OLED graphic display; Font Dimensions: User selectable
<b>Keypad</b>	PM9600-DDPX 4 Keys; Configurable
<b>Weight</b>	PD9630-DPX: 316.2 g / 11.15 oz PBT9600-DPX: 434.6 g / 15.33 oz PM9600-DDPX: 462.5 g / 16.32 oz
READING PERFORMANCE	
<b>Imager Sensor</b>	1280 x 800 pixels
<b>Light Source</b>	Aiming: 650 nm VLD Illumination: White, Red and Blue LED
<b>Print Contrast Ratio (Minimum)</b>	15%
<b>Reading Angle</b>	Pitch: +/- 52°; Roll (Tilt): 360°; Skew (Yaw): +/- 52°
<b>Reading Indicators</b>	Beeper (Adjustable Tone and Volume); Datalogic's 3GL™ (Three Green Lights) technology for good-read feedback; Green Spot on the Code; Dual Good-Read LEDs; Vibration
<b>Resolution (Maximum)</b>	1D Codes: 2 mil; 2D Codes: 4 mil
READING RANGES	
<b>Typical Depth of Field</b>	Minimum distance determined by symbol length and scan angle. Printing resolution, contrast, and ambient light dependent.
Code 128 2.5 mils: 2.5 to 9.8 cm / 1.0 to 3.9 in Code 128 5 mils: 2.5 to 16.9 cm / 1.0 to 6.7 in EAN/UPC 13mils: 2.5 to 22.5 cm / 1.0 to 8.9 in DataMatrix 5 mils: 2.0 to 10.0 cm / 0.8 to 3.9 in DataMatrix 10 mils: 2.0 to 16.2 cm / 0.8 to 6.4 in	
SAFETY & REGULATORY	
<b>Agency Approvals</b>	The product meets necessary safety and regulatory approvals for its intended use. The Quick Reference Guide for this product can be referred to for a complete list of certifications.
<b>Environmental Compliance</b>	Complies to China RoHS; Complies to EU RoHS; Complies to R.E.A.C.H.
<b>Laser Classification</b>	Caution Laser Radiation - Do not stare into beam; CDRH Class II; IEC 60825 Class 2
<b>LED Classification</b>	IEC 62471 Class 1 LED
UTILITIES	
<b>Datalogic Aladdin™</b>	Datalogic Aladdin configuration program is available for download at no charge.
<b>OPOS / JavaPOS</b>	OPOS and JavaPOS Utilities are available for download at no charge.
WARRANTY	
<b>Warranty</b>	3-Year Factory Warranty

## ACCESSORIES

### Base Stations / Chargers



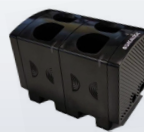
BC9630 Base station/charger Multi-Interface, removable battery  
BC9631 Base station/charger Multi-Interface, IP65

### Battery



RBP-PM96 Removable battery

### Multi-Battery Charger



MC-P096-M2 Multi Battery Charger 2 slots  
MC-P096-M4 Multi Battery Charger 4 slots  
MC-P096-E2 Extension modules, 2 slots

### Holders



HLD-P096 Holder